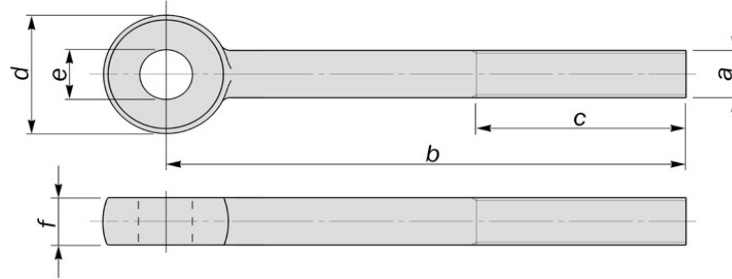


DIN 444 Type A Eyebolts



DIN 444 Type A Eyebolts													
Diameter	M6	M8	M8	M10	M10	M12	M12	M12	M16	M16	M16	M20	M20
b-Min.	35	40	126	45	126	55	126	201	70	126	201	100	126
b-Max.	90	125	140	125	150	125	200	260	125	200	260	125	200
C	18	22	28	26	32	30	36	49	38	44	57	46	52
d-Min.	12.9	16.9	16.9	18.7	18.7	23.7	23.7	23.7	30.4	30.4	30.4	38.4	38.4
d-Max.	14	18	18	20	20	25	25	25	32	32	32	40	40
E	6	8	8	10	10	12	12	12	16	16	16	18	18
f-Min.	8.52	10.3	10.3	13.3	13.3	16.3	16.3	16.3	18.16	18.16	18.16	23.16	23.16
f-Max.	9	11	11	14	14	17	17	17	19	19	19	24	24

Diameter	M20	M24	M24	M24	M30	M30	M36	M36	M39	M39			
d-Min.	201	100	126	201	150	201	160	201	160	201			
d-Max.	260	125	200	260	200	300	200	300	200	300			
C	65	54	60	73	72	85	84	97	90	103			
d-Min.	18.4	43.4	43.4	43.4	53.1	53.1	63.1	63.1	68.1	68.1			
d-Max.	40	45	45	45	55	55	65	65	70	70			
E	18	22	22	22	28	28	32	32	95	35			
f-Min.	23.16	27.16	27.16	27.16	33.00	33.00	40.00	40.00	45.00	45.00			
f-Max.	24	28	28	28	34	34	41	41	46	46			

Materials	Finishes
<i>Carbon Steel</i>	<i>Self Colour - Electplated</i>
<i>Stainless Steel</i>	<i>Galvanised</i>
<i>Alloy Steels</i>	<i>Sherardised</i>
<i>B7-4.6-5.6-8.8</i>	<i>PTFE Coating</i>